

The Y'Theatre”

THEATRE TECHNICAL SPECIFICATIONS

LAST UPDATED: DEC 2024

Please contact the Technical Team if you have any enquiries regarding the technical setup of the Theatre: technical@ymcaleics.org.uk

CONTENTS

Contact Details	3
Stage, Dimensions and Access.....	4
Stage Dimensions	4
Extra Staging.....	4
Crossover	4
Wing Space	4
Stage Access	4
Load in/out.....	4
Parking	5
Stepped Access.....	5
Step Free Access	5
Stage Management	5
Accommodation	6
Theatre level.....	6
Dressing Room 1.....	6
Dressing Room 2.....	6
Additional Spaces.....	6
Percy Barrett Meeting Room	6
Sports Hall.....	6
Flying/Above Stage	7
Cloths and Drapes.....	7
Sound.....	8
House PA	8
Loose Equipment Available	8
Piano	8
Lighting.....	9
Lighting Control	9
Desk:	9
DMX Universes.....	9
Standard Rig	10
Loose Lanterns/Lighting Equipment	10
Power	11
Digital Projection	11
Additional Equipment Hire.....	11
Electrical Safety	11
Stage Plan.....	13
Standard LX Plan	14

CONTACT DETAILS

Theatre Address:

The Y Theatre
7 East Street
Leicester
LE1 6EY

Theatre & Arts Manager – Hannah Torrance

htorrance@ymcaleics.org.uk

0116 204 6207

Deputy Theatre & Arts Manager – Callum Bonnett

cbonnett@ymcaleics.org.uk

0116 204 6248

Theatre & Events Co-Ordinator – Hayley Rogers

hrogers@ymcaleics.org.uk

0116 204 6209

Technical Co-Ordinator – Paul Rogers

progers@ymcaleics.org.uk

0116 204 6204

Senior Technician – Josef Carter

jcarter@ymcaleics.org.uk

The Y Theatre is a part of YMCA Leicestershire

YMCA Leicestershire is the leading youth homelessness charity for Leicester and Leicestershire, providing supported housing for children and young people as well as community services including our drop-in centre for homeless adults, working with disabilities, and our vibrant theatre, sports and arts. We are a diverse organisation with over 145 years of history in the city, adapting our services and our approach to the needs of our local communities.

Hire costs entitle each production to the use of 1 Technician and all equipment listed in this document including the use of our fixed rig. For additional hires please see our cost list section [here](#).

STAGE, DIMENSIONS AND ACCESS

Stage Dimensions

Proscenium/Main Stage width: 6.9m

(Masking flats are ordinarily present on both sides so reduce this by around 1m)

Depth of stage to Backcloth/Cyc: 5.1m (including Apron)

Apron: 1.1m

Stage Height: 1.08m

Height to Proscenium Arch: 4.8

Height to onstage Rig: 6.1m

Height to FOH bar from Auditorium floor: 7m

Extra Staging

5 x Aluminium Frame Deck 1.7m x 0.83m

- 1ft & 2ft Legs available
- Suitable for Drum risers etc.

4 x SICO 8ft x 4ft dual height folding staging is available for use on the auditorium floor. Advanced notice and agreement required.

Crossover

Suitable for single file walking between the Cyc and rear walls from USL stage door to SR, lit by blue flood. If projection is in use, blue flood will spill through Cyc.

Wing Space

Stage Left

MSL – 2m x 2.5m (with SM Position)

DSL – 2.5m x 2m. This wing contains the portable stage lift for accessible entry/egress to the stage. The lift can be moved and replaced with steps if preferred.

Stage Right

MSR – 1m x 2.5m (Due to Piano Storage)

DSR – 2.5m x 1.2m (WITH STEPS) Suitable for single file entrance/egress only

Stage Access

Load in/out

There is a loading bay outside of the main Theatre entrance (///aims.tones.lower), which is controlled by the council. We can apply for the suspension of this bay, if enough notice is given. This is rechargeable at cost, currently in the region of £85 per day.

Access to the Theatre is through the automatic double doors into the Theatre Bar and through 2 more sets of double doors to the Theatre. This entrance is flat and approx. 25m from outer doorway to stage. Smallest doorway measures; 1.6m wide, if you have any concerns please feel free to contact.

From this point equipment must be lifted either directly onto the stage, or carried up the stage steps.

Parking

For Vehicles under 2m in height:

- NCP [LE1 6EY, just before the Theatre] – With the NCP app - £0.95/h up to £8.95 for 5-24 hrs
- Dover Street [LE1 6PW] – Pay and Display open-air carpark

Vehicles over 2m:

- Grand Hotel [Chatham St, LE1 6ES] – No height restrictions but subject to availability. £10 for 8 hours or £17 for 24 hours.

After 6pm:

- You can park on single yellow lines, or in pay and display parking bays in the surrounding area for free.

Stepped Access

Acts can access the stage via steps directly opposite Dressing Room 1, from the backstage via the MSL wing, via steps on the front of the stage, or with a moved set of steps in DSL.

The Crossover can be used to gain access to SR for entry.

If steps are required directly into the auditorium, the front row of seats must be removed. This should be organised at contract stage ahead of tickets going on sale.

Step Free Access

We have a MOBILIFT Portable Manual Wheelchair Lift for step free access to the stage. This can be used;

Backstage DSL - with a limited head height of 1.32m when raised to stage height in the wing, and can be used Front of the stage if more head height is required. This will also require removal of some chairs.

Please get in touch with any accessibility requirements so that the team can work out the best plans for your event.

Stage Management

SM position in Mid Stage Left with Comms to Tech Position at the back of house.

Comms to Dressing Room and SM position from Tech position, consisting of;

- TecPro MS721 Master Station
- 2 x TecPro BP111
- 2 x Single Muff Headsets
- 2 x Relay Speakers in DR1 and 2

ACCOMMODATION

Theatre level

Dressing Room 1

- Seating for 10 (Sofa and chairs)
- Dressing Table and Mirror along rear wall, with additional lighting
- Full length mirror
- Tea & Coffee making facilities
- Fridge, Microwave and Toaster
- Iron and Ironing Board
- Costume Rail
- Wi-Fi access

Dressing Room 2

- Seating for 6
- Collapsible Dressing Table with Mirror and additional lighting
- Costume Rail
- Wi-Fi access

Two individual bathrooms with shower facilities available adjacent to Dressing Rooms.

Additional Spaces

We have two additional spaces for use as breakout or larger scale dressing rooms*

Percy Barrett Meeting Room

Can be configured as a boardroom, with seating for up to 12, or as a clear floor space.

Sports Hall

Can be split into two separate spaces with manually retractable half-net curtains running along one side, and across the middle of the court.

*PLEASE NOTE THAT NEITHER OF THESE SPACES HAS STEP FREE ACCESS TO BACKSTAGE
ADDITIONAL COSTS MAY BE INCURRED FOR HIRE

FLYING/ABOVE STAGE

- (US) i. Winch bar (Cyc and Split Blacks on Swipe Track)
- ii. Winch Bar (LX3)
- iii. Fixed Bar (Border)
- iv. Fixed Bar (Spare)
- v. Fixed Bar (Mid Stage Tabs)
- vi. Winch Bar (LX2)
- vii. Fixed Bar (Border)
- viii. Winch Bar (LX1 & Projector)
- (DS) ix. Fixed Bar (Border)

For a diagram of the stage, wing space and bar plot on pg. [14](#) and 15

Mechanical Winch Bars are operated from the side of stage by drill and are to be used by Y Theatre Technicians only.

Please discuss in advance anything you would like to fly with the Technical Co-ordinator as the practicability and weights will need to be checked.

Any additional rigging must also be approved in advance with the Technical Co-ordinator. Additional rigging outside of show hours may incur additional fees, please see cost list below

Cloths and Drapes

- Red FOH Tabs on manual winder, controlled from SL
- Black mid-stage tabs operated via rope SL
- Split Blacks or White Cyc available for US winch bar (Blacks on swipe track)

SOUND

House PA

MIDAS M32 Digital Desk with DL32 Stage Box (DSR) via CAT5
32 Input and 16 outputs (Outputs 11-16 are PA outs)

- Desk to be operated by in-house technicians unless previously agreed with Theatre
- CAT5 from Stage Box can be plugged into visiting company's desk if preferred

KV2 Audio PA consisting of;

- 2 x EX2.2 Subs - Main Auditorium
- 2 x EX10 Speakers - Main Auditorium
- 2 x EX10 Speakers - Balcony
- 2 x EX6 Speakers - Front Fill

Stage Monitoring consists of;

- 4x HK Audio D.A.R.T monitor wedges.

Loose Equipment Available

Microphones	Other
<ul style="list-style-type: none"> • 2 x Sennheiser e845 • 2 x Sennheiser MD735 • AKG Drum Mic Kit (1 x Kick, 4 x Clip-on, 2 x Overhead) • 1 x Sennheiser e609 • 2 x Sure PGA57 • 2 x SE SE1A Small Diaphragm Condenser • 1 x AKG 321E Gooseneck Mic • 2 x AT AT815B Rifle Mic • 1 x Wireless Sennheiser EW100 G2 Handheld • 1 x Sennheiser XSW 2-835 Handheld 	<ul style="list-style-type: none"> • 10 x Boom Stands • 2 x Round Base Straight Stands • 3 x Short Boom Stands • 6 x DI Boxes (Mono) • Mac Mini for playback (FOH Tech position) • Yamaha STAGEPAS 400BT • 2 x Speaker Stands

Piano

Reid-Sohn baby grand piano available.

A charge will be incurred for moving and tuning of the piano. Please liaise ahead of time so we can organise the booking of a piano tuner.

LIGHTING

The Theatre is a fully Hot Power/LED venue.

We still maintain two Generic tungsten profiles available for Gobo requirements until we acquire more LED lantern stock. These are available to use at the back of house (balcony) positions only. These only accept size B Gobos. We have a small stock of ROSCO Gobos, including; Break-up, Triangle Break-up, Foliage, Bars and Beam Splitters.

We have a standard rig in use (see plan pg10). Any alterations and refocussing of the rig will need to be discussed and agreed with the Technical team ahead of your event, and may incur a recharge. Fixtures on the FOH/Auditorium Bar are inaccessible for refocussing.

Lighting Control

Desk:

ChamSys MagicQ MQ50

- To be operated by in-house technicians unless previously agreed with Theatre.
- Standard patch file (complete with visualiser settings*) available on request.
- Files can be provided by visiting company and downloaded onto console.
- DMX lines can be switched in to the back of a visiting company desk/controller

DMX Universes

Universe	Splitters	Control
Universe 1	MSL Balcony (3 & 5 pin) 4 out Balcony Perch (3 & 5 pin) 2 out	FOH/Auditorium Bar LX1 (Over Stage) LX2 (Over Stage) LX3 (Over Stage)
Universe 2	MSR (3 & 5 pin) 2 out	Deck Fixtures Atmospherics

Standard Rig

1 x FOH Bar (PowerCon IWB with 5-pin DMX and 2 circuits of power. 150kg SWL)

This bar is inaccessible and only slight adjustments can be made (Theatre Technical staff only).

Focus on profiles cannot be changed.

Lantern	Q	Description	Standard Focus
Chauvet Colorado Solo 2	2	RGBW Zoom Wash (12 Ch)	DSC – Zoom to Wash
Chauvet Ovation E-910 FC	3	RGBAL Profile, 26° Lens (10 Ch)	DSR, DCS, DSL Specials (soft edge)
Chauvet Ovation F-915 FC	2	RGBAL Fresnel (with Zoom) (11Ch)	DS Wash

2 x FOH Slips/Booms (on both ends of balcony)

Lantern	Q	Description	Standard Focus
Chauvet DJ EVE 130 RGB	2	RGB PAR w 25° diffusor (9 Ch)	DS Sides wash

3 x Onstage LX Bars

(PowerCon IWB with 5-pin DMX and 2 circuits of power. 200kg UDL SWL)

Lantern	Q	Description	Standard Focus
Chauvet Ovation F-915 FC	2	RGBAL Fresnel (with Zoom)	US Wash
Chauvet Ovation CYC FC	4	RGBAL Cyc Wash	Backcloth/Mid Stage Tabs Wash
Chauvet DJ EVE 130 RGB	2	RGB PAR w 25° diffusor (9 Ch)	Mid Stage High Side Wash
Chauvet ColorDash Par Hex 12	6	RGBAW+UV Par	3 x DS/US Specials

Floor Units

Lantern	Q	Description	Standard Focus
Chauvet ColorDash Batten Q12	4	RGBA Batten (52ch)	Uplighter on legs

Loose Lanterns/Lighting Equipment

Lantern	Q	Description
Chauvet DJ EVE 130 RGB	2	RGB PAR w 25° or 45° diffusor (9 Ch)
Chauvet Ovation E-910 FC	1	RGBAL Profile, 26° Lens
Mirror Ball and Motor	1	50cm Ball. Non DMX 1RPM motor. Advanced notice required for use, may incur additional cost due to additional rigging time.

POWER

USR <ul style="list-style-type: none"> • 2 x 13A Socket 	
MSR <ul style="list-style-type: none"> • 1 x 16A Ceeform Socket (Single Phase) • 4 x 13A Sockets 	MSL <ul style="list-style-type: none"> • 1 x 63A Ceeform Socket (Single Phase) • 2 x 32A Ceeform Socket (Single Phase) • 3 x 16A Ceeform Socket (Single Phase) <ul style="list-style-type: none"> • 8 x 13A Sockets
DSR <ul style="list-style-type: none"> • 4 x 13A Socket • 1 x 16A Ceeform Socket (Single Phase) – Powers DL32 Rack and wireless units 	

We also have a small stock of 13A and 16A to 13A extensions available for use. Please let us know of power drop needs ahead of time.

DIGITAL PROJECTION

BenQ LU935ST Short Throw Laser Projector

- 5500 ANSI Lumens
- WUXGA Resolution
- Projector located centrally on LX1
- Focussed for US Cyc, above head level
- HDMI feed from MSL & FOH Tech position
- Mac Mini at FOH Tech position available for projection

ADDITIONAL EQUIPMENT HIRE

We can source additional equipment for shows if required. Please liaise with the team as soon as possible so we can gather quotes for you. Hire costs are rechargeable.

ELECTRICAL SAFETY

Please ensure all electrical equipment brought into the Theatre has valid PAT certificate. If a Theatre Technician believes that electrical equipment bought in is not suitable for use, they are within their rights to remove said equipment from the venue.

FIRE

Live flame may be used on stage at the discretion of the Technical Coordinator or Duty Technician. Requests for usage of live flame should be made in advance of your get-in, and will be subject to an inspection on the day of performance(s). All firearms are now classified as prohibited weapons. This includes de-activated guns and guns converted to blank firing. Weapons may only be used within a production in agreement with local police authority, and with a registered armourer on site. The guns

must either be stored in a secure locked space on site, or taken off the premises each night. Please note we will not be able to make provision for this without full information and risk assessments.

ADDITIONAL COSTS

If you require anything in addition to our offer we are happy to support this, and requests for staff or equipment should be requested to our technical team (technical@ymcaleics.org.uk) no later than 2 weeks prior to performance date.

Use of the theatre for additional get in or tech time will be charged at £110/hour.

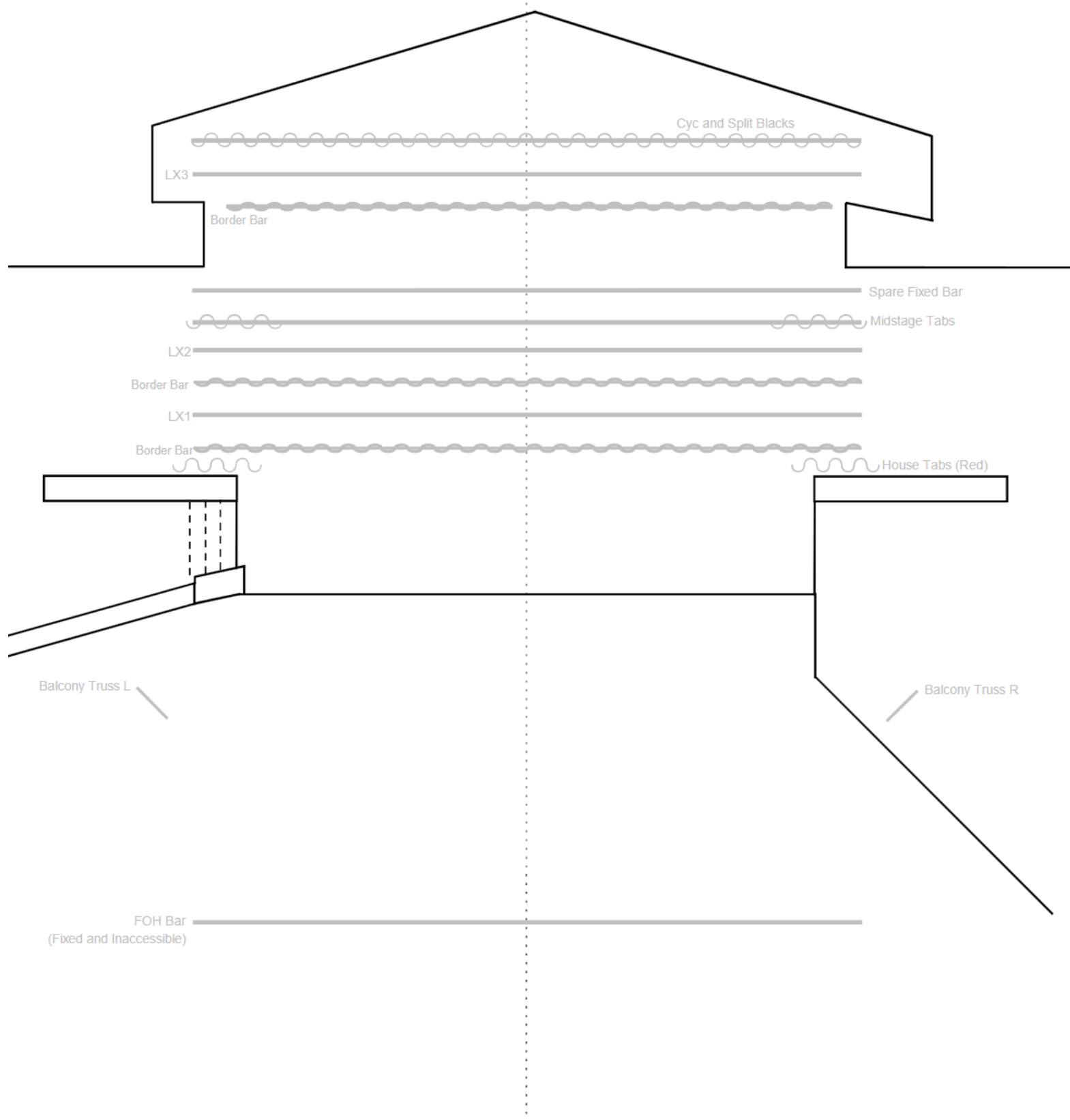
Mirror Ball - £40/show.

Any re-rigging request will be subject to a charge starting at a 4-hour minimum call (£440)

Use of confetti cannon, or any show that requires extra clean up time will be subject to a £40 recharge, or your own help in clean up and a packet of biscuits.

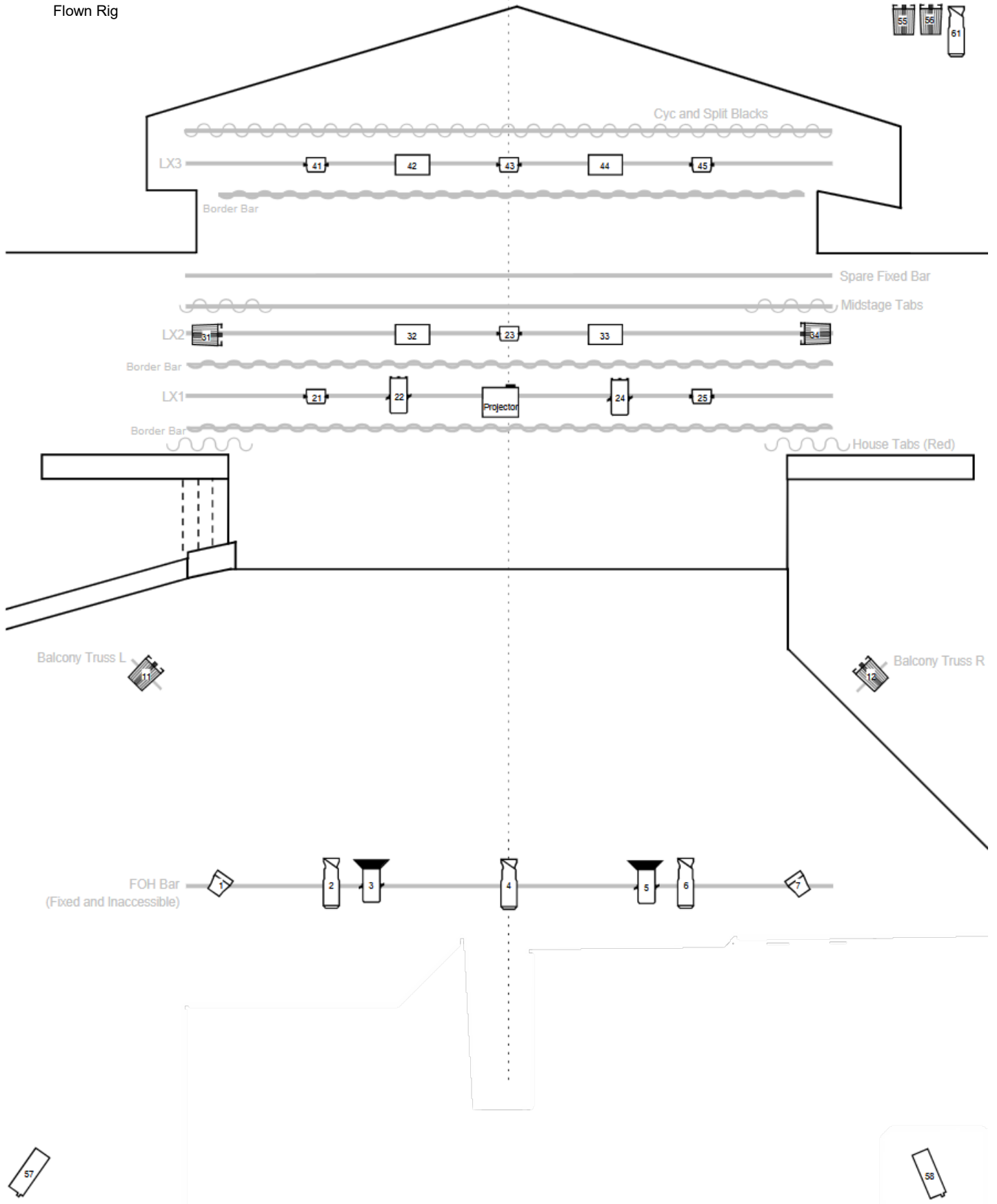
STAGE PLAN

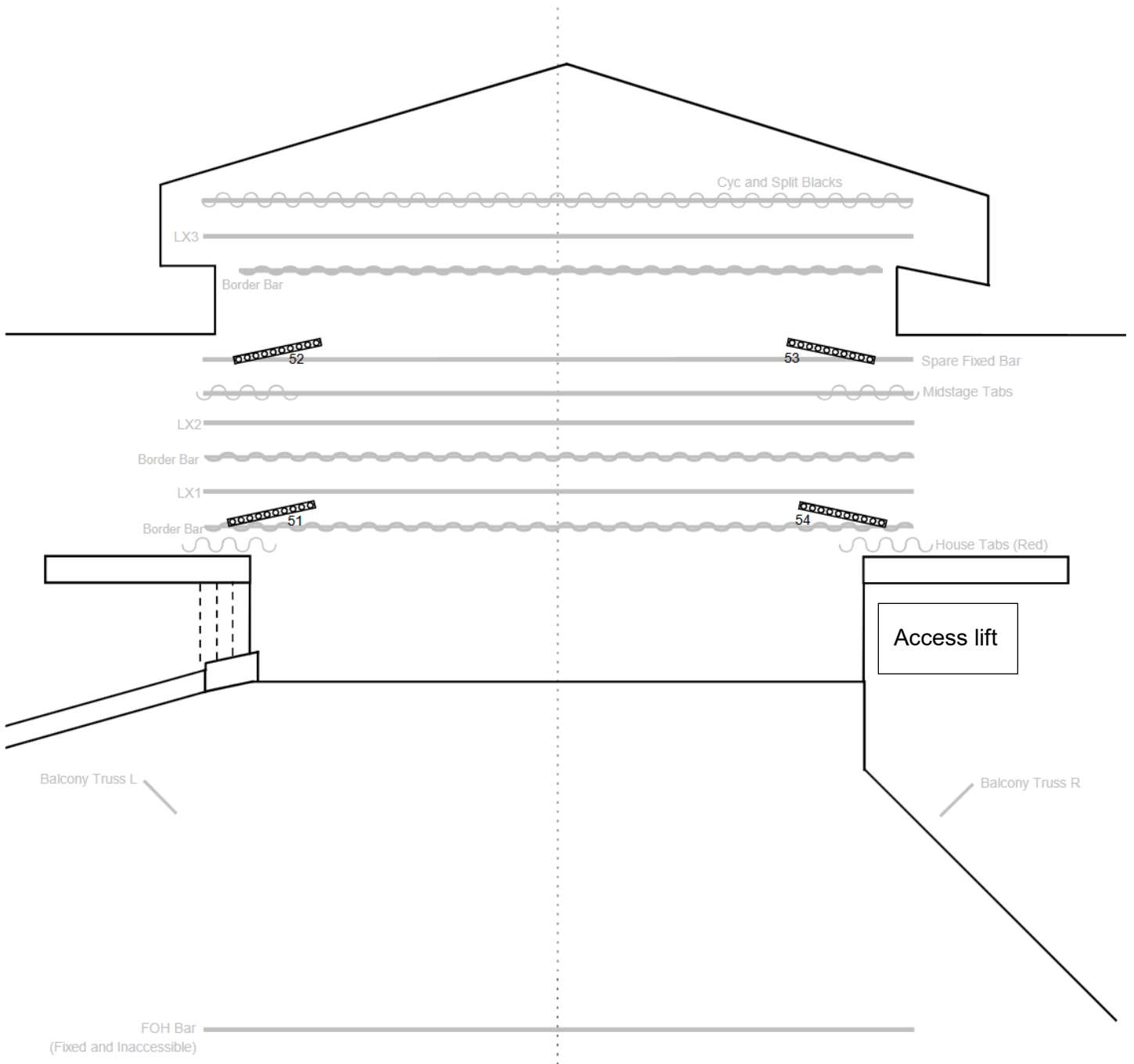
*Not to scale




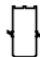
STANDARD LX PLAN

Flown Rig







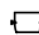
 Chauvet Ovation E910-FC
26° Fixed


 Chauvet Ovation F915-FC


 Chauvet DJ EVE-130RGB

 Strand Cantata 11:26°

 Chauvet COLORado 2 Solo

 Chauvet COLORdash H12P

 Chauvet CYC1-FC

 Chauvet COLORdash Batten-Quad 12