

The Y Theatre”

THEATRE TECHNICAL SPECIFICATIONS

LAST UPDATED: JUNE 2022

Please contact the Technical Co-ordinator if you have any enquiries regarding the technical setup of the Theatre: bkey@leicesterymca.co.uk

CONTENTS

Contact Details	3
Stage Dimensions	4
Stage Access	4
Extra Staging	5
Flying/Above Stage	5
Cloths and Drapes	5
Stage Management.....	5
Accommodation.....	6
Sound	6
House PA.....	6
Loose Equipment Available	6
Microphones:.....	6
Stands:.....	7
Other:	7
Lighting	7
Lighting Control.....	7
Rig.....	8
Loose Lanterns used as floor/extras	8
Power	8
Digital Projection	9
Piano.....	9
Stage Plan	10
Standard LX Rig Plan.....	10

CONTACT DETAILS

Theatre Address:

The Y Theatre
7 East Street
Leicester
LE1 6EY

Theatre & Events Manager – Michael Harris-Wakelam

mharris-wakelam@leicesterymca.co.uk

0116 204 6216

Deputy Centre Manager – Hannah Torrance

htorrance@leicesterymca.co.uk

0116 204 6207

Technical Co-Ordinator & Skills Coach – Bex Key

bkey@leicesterymca.co.uk

07436 409298

The Theatre is part of the Y Leicester

The Y is the leading youth homelessness charity for Leicester and Leicestershire. As a local YMCA we also provide other community services including our drop-in centre for homeless adults, working with disabilities, and our vibrant theatre, sports and arts. We are a diverse organisation with over 130 years history in the city, adapting our services and our approach to the needs of our local communities.

STAGE DIMENSIONS

Without Stage Extension:

Proscenium/Main Stage width: 6.9m

(Masking flats are ordinarily present on both sides so reduce this by around 1m)

Depth of stage to Backcloth/Cyc: 5.1m (including Apron)

Apron: 1.1m

Stage Height: 1m

Height to Proscenium Arch: 4.8

Height to onstage Rig: 6.1m

Height to FOH bar from Auditorium floor: 7m

With Stage Extension – part width (1m x 6m)

Depth of stage to Backcloth/Cyc: 6.1m (including Apron and extension)

Apron: 2.1m

Stage Height: 1m

Crossover behind cyc suitable for single file walking

Useable Wing Space:

Stage Left

MSL – 2m x 2.5m (with SM Table)

DSL – 2.5m x 1.2m (WITH STEPS) Suitable for single file entrance/egress only

Stage Right – Accessible via Crossover

MSR – 1m x 2.5m (Due to Piano Storage)

DSR – 2.5m x 1.2m (WITH STEPS) Suitable for single file entrance/egress only

Stage Access

There is a loading bay outside the front of the Theatre.

Access is through the double doors into the Theatre bar and through 2 more sets of double doors to the Theatre. It is flat and approx. 25m

Everything will need to be moved to the stage via lifting or walking up the steps with it.

Extra Staging

5 x Aluminium Frame Deck 1.7m x 0.83m

- 1ft & 2ft Legs available
- Suitable for Drum risers etc.

4 x Sico 8ft x 4ft dual height folding stage also usually available.

FLYING/ABOVE STAGE

- (US) i. Winch bar (cyc – used for projection/blacks)
- ii. Winch Bar (LX)
- iii. Fixed Bar (Border)
- iv. Fixed Bar (Spare)
- v. Fixed Bar (Mid Stage Tab)
- vi. Winch Bar (LX)
- vii. Fixed Bar (Border)
- viii. Winch Bar (LX)
- (DS) ix. Fixed Bar (Border) & Projector position

Mechanical Winch Bars are operated from the side of stage by drill. To be used by Theatre Staff only.

Please discuss anything you would like to fly with the Technical Co-ordinator as the practicability and weights will need to be checked.

Cloths and Drapes

- Red FOH Tabs on winder controlled from SL
- Black mid-stage tabs operated via rope SL
- Black split blacks or White Cyc available for US winch bar

STAGE MANAGEMENT

SM Table/position in SL with Comms to Tech Position at the back of house.

Comms to Dressing Room and SM position from Tech position

ACCOMMODATION

1 x Large Dressing Room

- with seats and sofas for 10.
- Dressing Tables and Mirrors along wall, with Full length mirror.
- Fridge, Tea & Coffee making facilities, Costume Rail, Microwave, Washer/Dryer and WiFi

1 x Dressing Room with seating, mirrors and table space for 6

2 x Toilets & Showers adjacent

SOUND

House PA

MIDAS M32 Digital Desk

Linked via CAT5 to MIDAS DL32 Stage Box

32 Input and 16 outputs

- Desk to be operated by in-house technicians unless previously agreed with Theatre
- CAT 5 from Stage Box can be plugged into visiting company's desk if preferred

3kW Active KV2 Audio PA system.

5x HK Audio D.A.R.T monitor wedges.

All audio on dedicated supply

Loose Equipment Available

Microphones:

- 2 x Sennheiser e845
- 2 x Sennheiser MD735
- Full Set AKG Drum Mic's (1 x Kick, 4 x Clip-on, 2 x Overhead)
- 1 x Sennheiser e609 (Amps & Drums)
- 2 x Sure PGA57 (Amps and Drums)
- 2 x SE SE1A Instrument Condenser mic's
- 1 x AKG 321E Gooseneck mic
- 2 x AT AT815b Rifle Mic's
- 1 x Wireless Sennheiser ew 100 G2 Handheld
- 1 x Sennheiser XSW 2-835 Handheld

Stands:

- 12 x Boom Stands
- 2 x Straight Stands
- 3 x Short Boom Stands

Other:

- 6 x DI Boxes (Mono)
- Mac Mini for playback of sound via QLab/other
- Yamaha Stagepas 400BT
- 2 x Speaker Stands

LIGHTING

The Theatre is a fully Hot Power/LED venue.

We have a small number of Generic tungsten profiles available for Gobo requirements until we acquire more profile LED lantern stock. These are available to use at the back of house (balcony) positions only.

We have a standard rig in use (see plan pg10). Over-stage can be altered and added to as required, in discussion with the technical co-ordinator.

Lighting Control

Desk: Chamsys MagicQ MQ50

- To be operated by in-house technicians unless previously agreed with Theatre.
- Standard patch file (complete with visualiser settings)* available on request.
- Files can be provided by visiting company and downloaded onto console.
- DMX lines can be switched in to the back of a visiting company desk/controller

2 x Universes DMX

- Universe 1 FOH and over stage
- Universe 2 Deck

Rig

1 x FOH Bar (Powercon IWB with 5-pin DMX and 2 circuits of power. 150kg SWL)

- These can be partially refocussed.

Lantern	Q	Desc	Standard Focus
Chauvet Colorado Solo 2	2	Homogonised Zoom Wash (12 Ch)	DSC – Zoom to Wash
Chauvet Ovation E-910 FC	3	RGBAL Profile, 26° Lens (10 Ch)	DSR, DCS, DSL Specials
Chauvet Ovation F-915 FC	2	RGBAL Fresnel (with Zoom) (11Ch)	DS Wash

2 x FOH Slips/Booms (on both ends of balcony)

Lantern	Q	Desc	Standard Focus
Chauvet DJ EVE 130 RGB	2	RGB Small Wash (9 Ch)	DS Sides wash

3 x Onstage LX Bars

(Powercon IWB with 5-pin DMX and 2 circuits of power. 200kg UDL SWL)

Lantern	Q	Desc	Standard Focus
Chauvet Ovation E-910 FC	1	RGBAL Profile, 26° Lens	USC
Chauvet Ovation F-915 FC	2	RGBAL Fresnel (with Zoom)	US Wash
Chauvet Ovation CYC FC	4	RGBAL Cyc Wash	Backcloth/Midstage Tabs Wash
Chauvet DJ EVE 130 RGB	2	RGB Small Wash (9 Ch)	Midstage Side Wash
Chauvet ColorDashPar Hex	6	RGBAW+UV Par	3 x DS/US Specials

Loose Lanterns used as floor/extras

Lantern	Q	Desc	Standard Focus
Chauvet Color Dash Batten Q12	4	Batten (52ch)	Uplighter on legs
Chauvet DJ EVE 130 RGB	2	RGB Small Wash (9 Ch)	

POWER

- Sound 16A sockets around the stage
- 13amp sockets located around the stage

Located DSL

- 1 x 63A Ceeform Socket
- 2 x 32A Ceeform Socket

DIGITAL PROJECTION

BenQ MW 721 Data Projector

- 3,500lm
- Focussed for US cyc
- HDMI feed from Stage & Tech position
- Mac Mini at Tech position to play Powerpoint/Keynote/images/videos

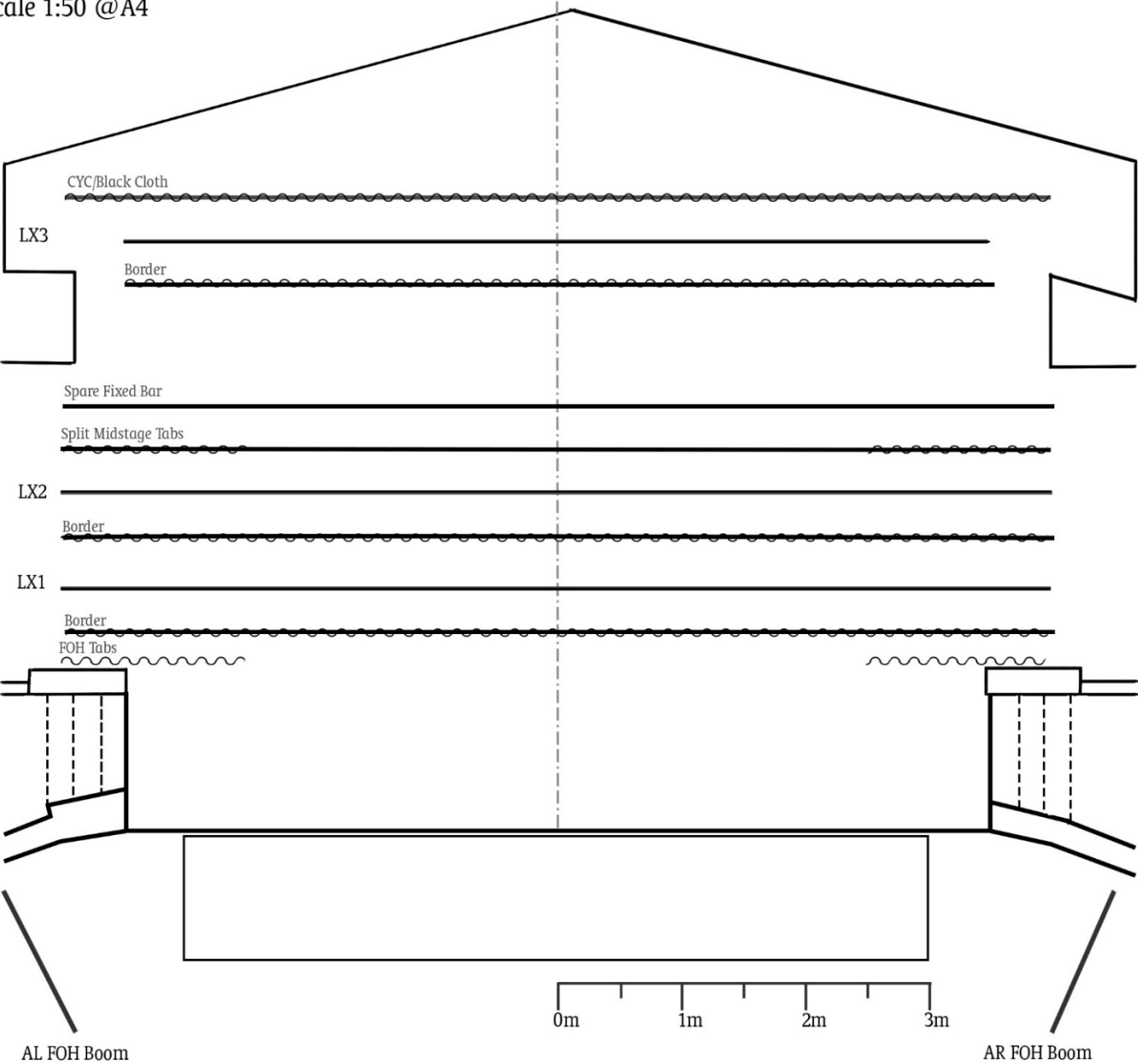
PIANO

Reid-Sohn baby grand piano available.

- Can be used on stage or on stalls floor
- A charge will be incurred for tuning and moving of the piano

STAGE PLAN

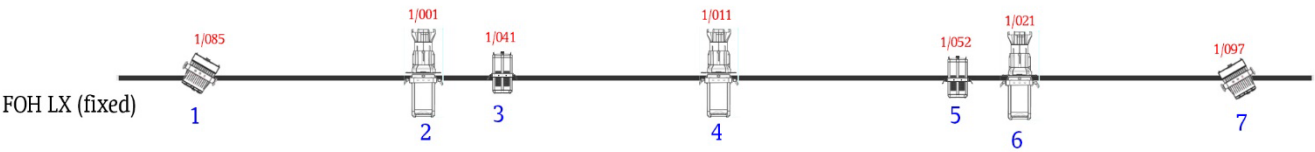
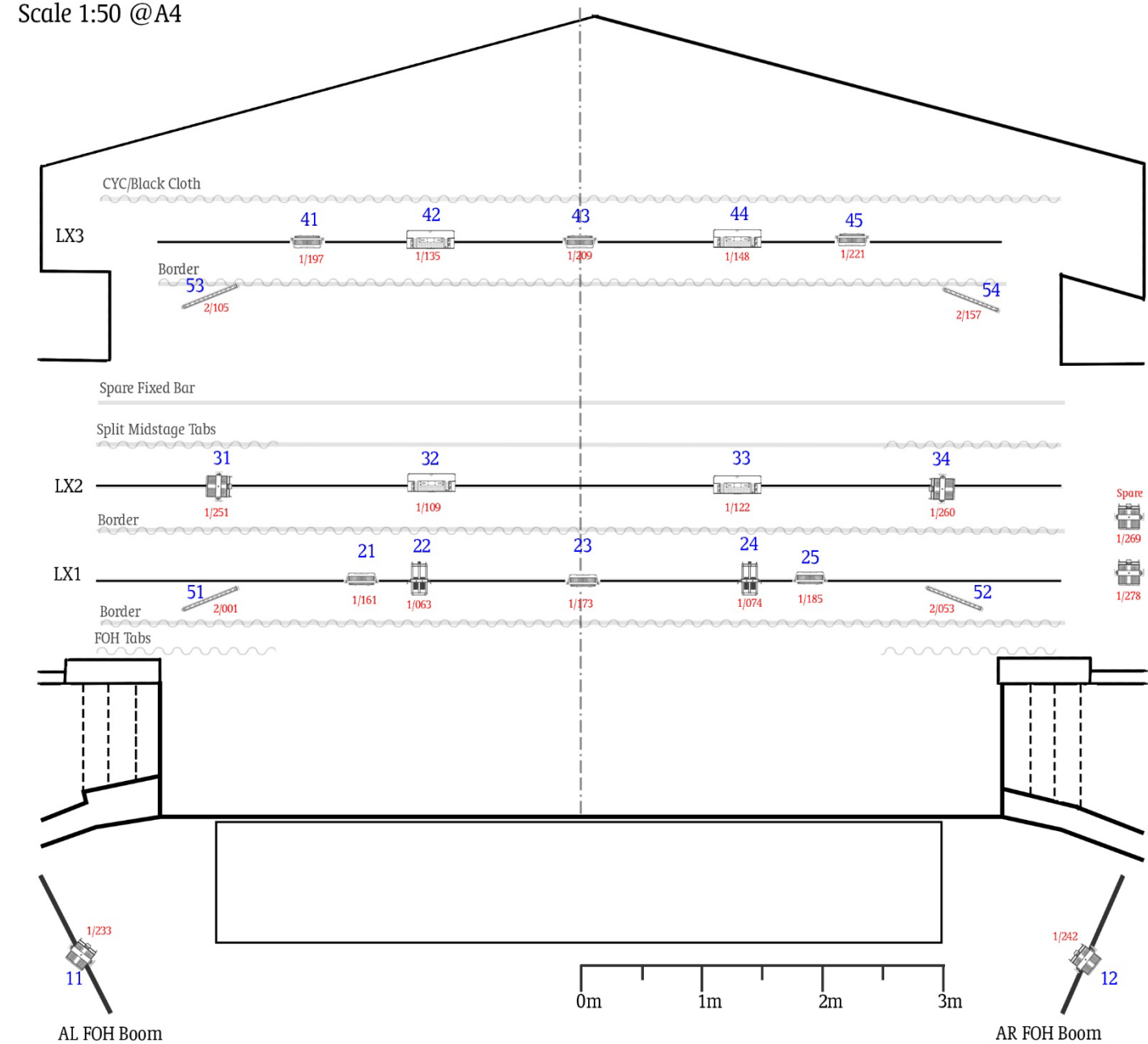
Scale 1:50 @A4



FOH LX (fixed)

The Y Theatre Technical Specifications

Scale 1:50 @A4



- | | | |
|-------------------------|---------------------------|------------------------------|
| Chauvet Ovation F-915 | Chauvet Ovation CYC FC | Chauvet COLORDash Batten Q12 |
| Chauvet Ovation E-910 | Chauvet DJ EVE P-130 | |
| Chauvet COLORado Solo 2 | Chauvet COLORDash Hex Par | |